



**Application for Permanent Spacing Unit  
Application for Compulsory Pooling**

**Dagney 33-21 #2H**

**Dagney 33-21 #3H**

**Dagney 33-21 #4H**

**All of Sections 21, 28, & 33 - T26N - R59E  
Richland County, Montana**

**Department of Natural Resources  
And Conservation**

**Board of Oil & Gas Conservation  
Of the State of Montana**

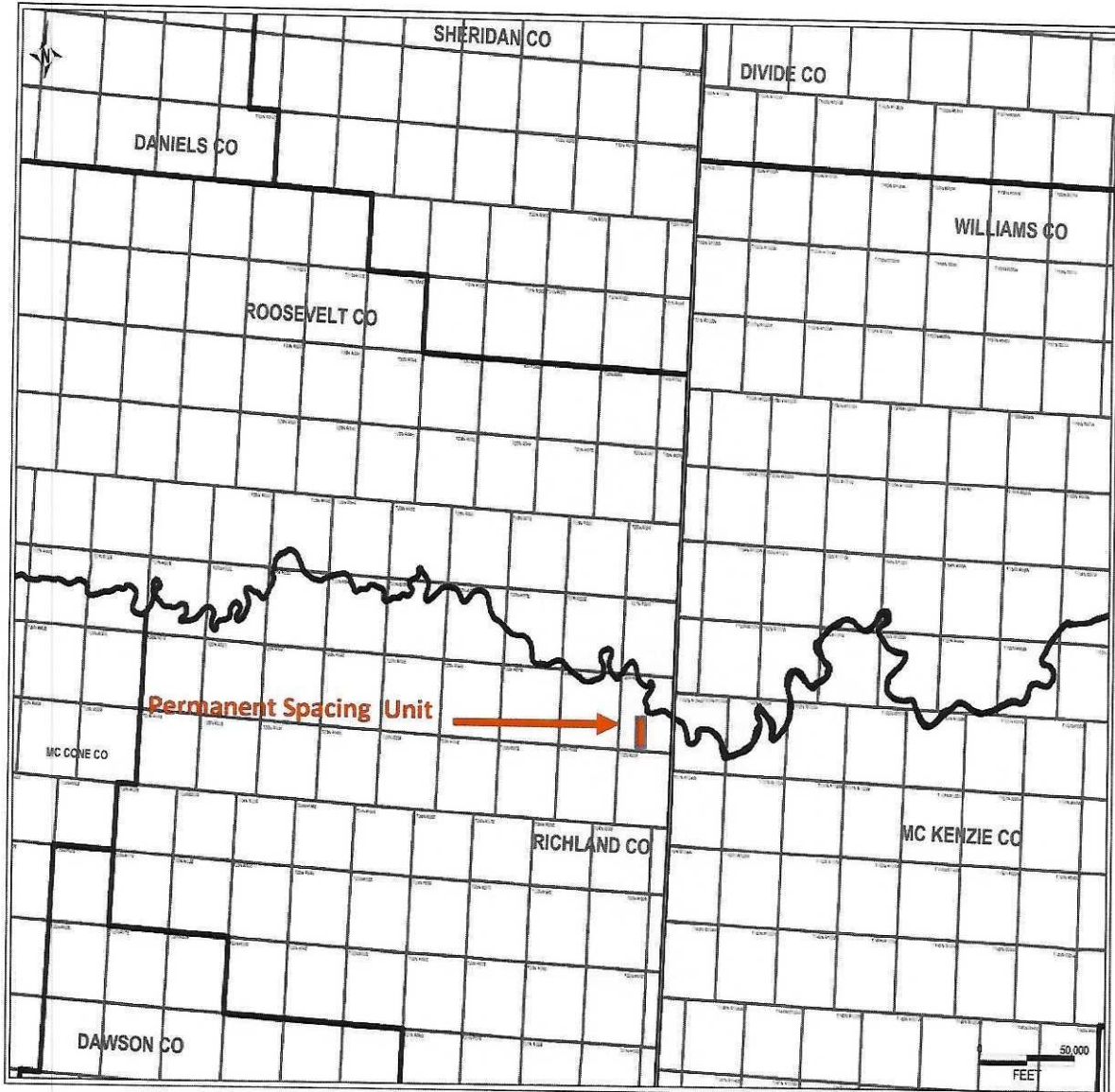
**Docket No. 13-2021, 14-2021**

**April 8, 2021**



## TABLE OF CONTENTS

<u>DESCRIPTION</u>	<u>EXHIBIT NO.</u>
Regional Location Map	L-1
Tract Map	L-2
Ownership Schedule	L-3
Middle Bakken Reservoir Structure Map	G-1
Middle Bakken Reservoir Isopach Map	G-2
Type Log	G-3
Wellbore Diagram	E-1 - E-2
Well Plat	E-3 - E-4
Reserves and Economic Analysis	E-5 - E6
Production Profile	E-7 - E-8

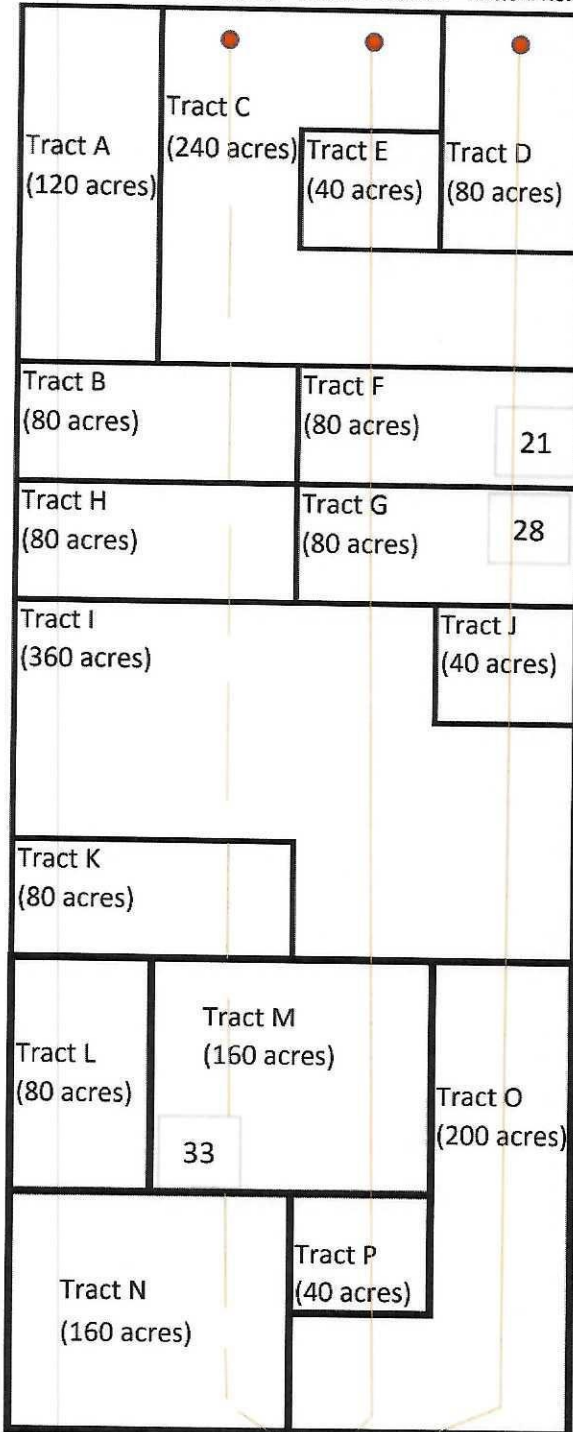


**Regional Locator Map**  
Permanent Spacing Unit  
T26N-R59E-Sections 33, 28, & 21  
Richland County, Montana



T26N-R59E- Sections 33, 28, & 21  
 Richland County, Montana  
 (1920.00 Acres)

Bottom Hole #2H Bottom Hole #3H Bottom Hole #4H Recapitulation



Tract #	Acres	% in CA
Tract A (FED/FEE)	120	6.25%
Tract B (FED)	80	4.17%
Tract C (FEE)	240	12.50%
Tract D (FEE)	80	4.17%
Tract E (FED)	40	2.08%
Tract F (FEE)	80	4.17%
Tract G (FEE)	80	4.17%
Tract H (FEE)	80	4.17%
Tract I (FEE)	360	18.75%
Tract J (FED)	40	2.08%
Tract K (FEE)	80	4.17%
Tract L (FEE)	80	4.17%
Tract M (FEE)	160	8.33%
Tract N (FEE)	160	8.33%
Tract O (FEE)	200	10.42%
Tract P (FED)	40	2.08%
<b>Total</b>	<b>1920</b>	<b>100%</b>

**Working Interest Summary**

Kraken Oil & Gas LLC	74.1342%
Equinor Energy, LP	3.6591%
Continental Resources Inc.	10.0651%
Edward and Marilyn Ervin	0.0079%
BAR 2, LLC	0.0059%
Hancock Enterprises	0.2170%
Northern Oil & Gas, Inc.	10.5834%
Headington Oil Limited Partnership	0.5208%
JLL Energy LLC	0.0020%
Roger A. Clark	0.0020%
Craig A. Slawson 2014 Rev. Trust	0.0040%
Dyco Petroleum Corporation	0.1563%
Devon Energy Production Company	0.4167%
James and Linda Robbins	0.0059%
Calark, Inc.	0.1302%
Carolyn Dutzi	0.0895%
<b>Total</b>	<b>100.0000%</b>

Surface  
Loc.

WI Non-Consent  
 Unleased Non-Consent





Ownership Schedule  
T26N-R59E- Sections 33, 28, & 21  
Richland County, Montana

**Tract A (120.00 Acres)**

**Mineral and Royalty Owners**

United States of America  
John Dale Berry  
Bonnie C. Berry  
Bessie M. Rogers  
Paul Bennett  
Jimmy Lee Alexander  
Anne H. Livet  
Fortin Enterprises, Inc.  
Brehm Investment Group, Inc.  
Daniele Alexander  
Jasmine Properties, LLC  
Marilyn Bennett Alexander  
Eliabeth Mertz  
Silver Spur Resources, LLC  
Cottonwood Creek Resources, LLC  
Charlie Lyndes  
Billie M. Goggin  
DLG Energy, LLC  
Thomas A. Morgan  
Barnett R/E Ventures LLC  
Hancock Enterprises  
Curtis Bennett  
Carolyn Dutzi  
Flying Wolf Enterprises, Inc.  
Wildcat Investments Corp  
Wanda Morgan Trust

**Working Interest Owners**

Kraken Oil and Gas LLC  
Equinor Energy LP  
Hancock Enterprises  
Carolyn Dutzi

**Tract B (80 Acres)**

**Mineral and Royalty Owners**

United States of America  
**Working Interest Owners**  
Kraken Oil and Gas LLC

**Tract C (240 Acres)**

**Mineral and Royalty Owners**

Diane Maas  
Gloria Docktor  
Robert D. Woodward  
BL3 Mineral Partnership  
Darlene McNary  
McNary Revocable Living Trust  
Roger Berry  
Karen Ruth McKenzie  
John Berry

Bonnie C. Berry

Bessie M. Rogers

Bridgepoint Min. Acq. Fund 2 LLC

Hat Creek Royalty LTD

Larry E. Voss

Silver Spur Resources

Wanda Morgan Trust

Charlie Lyndes

Billie M. Gogging

DLG Energy, LLC

Thomas A. Morgan

Barnett R/E Ventures, LLC

Cottonwood Creek Resources, LLC

**Working Interest Owners**

Kraken Oil and Gas LLC  
Devon Energy Petroleum Corporation  
Edward and Marilyn Ervin  
Roger A. Clark  
JLL Energy LLC  
James and Linda Robbins  
Craig A. Slawson 2014 Rev. Trust  
Northern Oil and Gas, Inc.  
Bar 2, LLC

**Tract D (80 Acres)**

**Mineral and Royalty Owners**

Gail Slotsve  
Audrey McRae  
Carol Bruer  
Ellen R. Rasmussen  
Gregory and Carol Bruer  
**Working Interest Owners**  
Kraken Oil and Gas LLC  
Continental Resources LLC  
Calark Inc.  
Headington Oil Limited Partnership  
Dyco Petroleum  
Equinor Energy LP

**Tract E (40 Acres)**

**Mineral and Royalty Owners**

United States of America

**Working Interest Owners**

Kraken Oil and Gas LLC

**Tract F (80 Acres)**

**Mineral and Royalty Owners**

Paul Bennett  
John Berry  
Bonnie C. Berry  
Bessie M. Rogers  
Benjamin Minerals, Inc.  
Jimmy Lee Alexander  
Anne Hodge Livet  
Fortin Enterprises, Inc.  
Brehm Investment Group, Inc.  
Daniele Alexander  
Marilyn Alexander  
Elizabeth Mertz  
Curtis Bennett  
Flying Wolf Enterprises, Inc.

**Wildcat Investment Corp.**

Silver Spur Resources, LLC

Wanda Morgan Trust

Charlie Lyndes

Billie M. Goggin

DLG Energy, LLC

Thomas A. Morgan

Barnett R/E Ventures, LLC

Red Crown Royalties, LLC

Hancock Enterprises

Carolyn Dutzi

Jasmine Properties

Cottonwood Creek Resources, LLC

Frase Tucker Resources

**Working Interest Owners**

Kraken Oil and Gas LLC

Equinor Energy, LP

Hancock Enterprises

Carolyn Dutzi



Ownership Schedule  
T26N-R59E- Sections 33, 28, & 21  
Richland County, Montana

**Tract G (80 Acres)**

**Mineral and Royalty Owners**

Paul Bennett  
John Berry  
Bonnie C. Berry  
Bessie M. Rogers  
Benjamin Minerals, Inc.  
Jimmy Lee Alexander  
Anne Hodge Livet  
Fortin Enterprises, Inc.  
Brehm Investment Group, Inc.  
Daniele Alexander  
Marilyn Alexander  
Elizabeth Mertz  
Curtis Bennett  
Flying Wolf Enterprises, Inc.  
Wildcat Investment Corp.  
Silver Spur Resources, LLC  
Wanda Morgan Trust  
Charlie Lyndes  
Billie M. Goggin  
DLG Energy, LLC  
Thomas A. Morgan  
Barnett R/E Ventures, LLC  
Red Crown Royalties, LLC  
Hancock Enterprises  
Carolyn Dutzi  
Jasmine Properties  
Cottonwood Creek Resources, LLC  
Fraser Tucker Resources

**Working Interest Owners**

Kraken Oil and Gas LLC  
Equinor Energy, LP  
Hancock Enterprises  
Carolyn Dutzi

**Tract H (80 Acres)**

**Mineral and Royalty Owners**

Kittleson Family Mineral Trust  
H. Lynn Morgan  
Deborah J. & H. Lee Norby  
James Kittleson  
Suzanne Kittleson Best Living Tr.  
Joni Kittleson  
Rodney Kittleson  
Richland County, MT.

**Working Interest Owners**

Kraken Oil and Gas LLC

**Tract I (360 Acres)**

**Mineral and Royalty Owners**

Robert Candee  
Jason Scott Hukill Trust  
Tracy Rude  
Lynn Ann Engum  
KJBK Kallevig Family Ltd. Part.,  
Coleen Baxter  
Frank & Patty Steinbeck Min. Trust  
Margaret Steinbeck  
Douglas Engel  
Kringen Oil, LLC  
Tri-Star Minerals  
Smokey Oil, LLC  
Six T LLC  
Elliot Oil Company  
Sundheim Oil Corporation  
Knapp Oil Corporation  
The Petram Group LLC  
Thomas Hanger  
Meagher Oil & Gas Properties Inc.  
Betty Lou Stocking  
Pearl May Reeve  
Louella Bricker  
Ruth Dorfner  
Sharla Faye Bruun  
Tim Bruun  
Janice L. Blahm  
Hall Family Trust  
Larson Family Trust  
Robinson Family Trust  
Marcia G. Larson Farrell  
Douglas F. and Niki Engel, JT  
Luther Bruun  
**Working Interest Owners**  
Kraken Oil and Gas LLC

**Tract J (40 Acres)**

**Mineral and Royalty Owners**

United States Of America  
**Working Interest Owners**  
Continental Resources

**Tract K (80 Acres)**

Melanie Ogden  
Richard W. Miller  
Vernon L. Miller  
Randy R. Klasna  
Rhonda Lee Klasna  
Meldhal, LLC  
Rae V. Meldhal  
Robert Allen Meldhal  
Brian Knudson  
Dennis a. Knudson  
Kent M. Knudson  
Ardell M. Knudson  
Gene C. Knudson  
Nathan & Connie Hornbeck Tr.  
**Working Interest Owners**  
Kraken Oil and Gas LLC  
Equinor Energy, LP



Ownership Schedule  
T26N-R59E- Sections 33, 28, & 21  
Richland County, Montana

**Tract L (80 Acres)**

**Mineral and Royalty Owners**

Dale Williston Minerals 2011, LP  
Haymaker Holding Company, LLC

Beverly Haas

Sheldon Haas

Laurie Anderson

**Working Interest Owners**

Kraken Oil & Gas LLC  
Northern Oil & Gas, Inc.

**Tract O (200 Acres)**

**Mineral and Royalty Owners**

Kraken Oil & Gas, Inc.

Rigs the Land Dog, LLC

Discovery Oil, LLC

KRP Bakken I, LLC

Rivercrest Royalties II, LLC

Diversified Rox Minerals LLC

BRD Royalty Holdings, LLC

RTM Minerals LLC

Lowry Energy Partners

The Burnett Foundation Trust

Kimbell Royalty Holdings, LLC

**Working Interest Owners**

Kraken Oil & Gas LLC  
Northern Oil & Gas, Inc.

**Tract M (160 Acres)**

**Mineral and Royalty Owners**

Kittleson Family Partnership, LP

Dennis Ray Haugen

Judith Ann Winsor

Marvin Haugen

Robert Haugen and Jeri Haugen

DR Family Irr. Mineral Trust

Christopher and Mary Welter

**Working Interest Owners**

Kraken Oil & Gas LLC  
Continental Resources, Inc.

**Tract P (40 Acres)**

**Mineral and Royalty Owners**

United States of America

**Working Interest Owners**

Continental Resources, Inc.

**Tract N (160 Acres)**

**Mineral and Royalty Owners**

H. Lynn Morgan

H. Lee and Deborah Norby

Kittleson Family Partnership, LP

James Kittleson

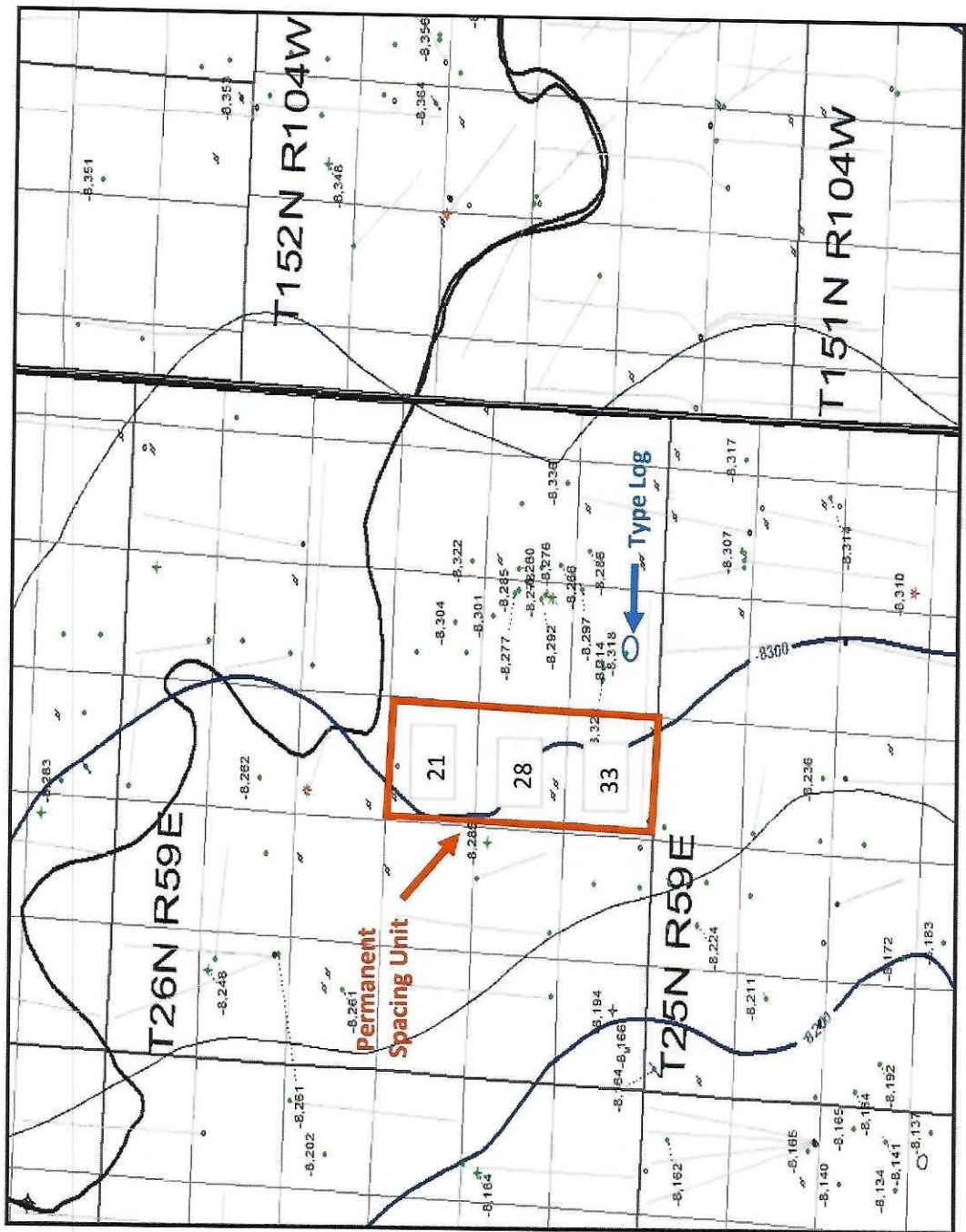
Suzanne Kittleson Best Living Trust

Joni Kittleson

Rodney C. Kittleson

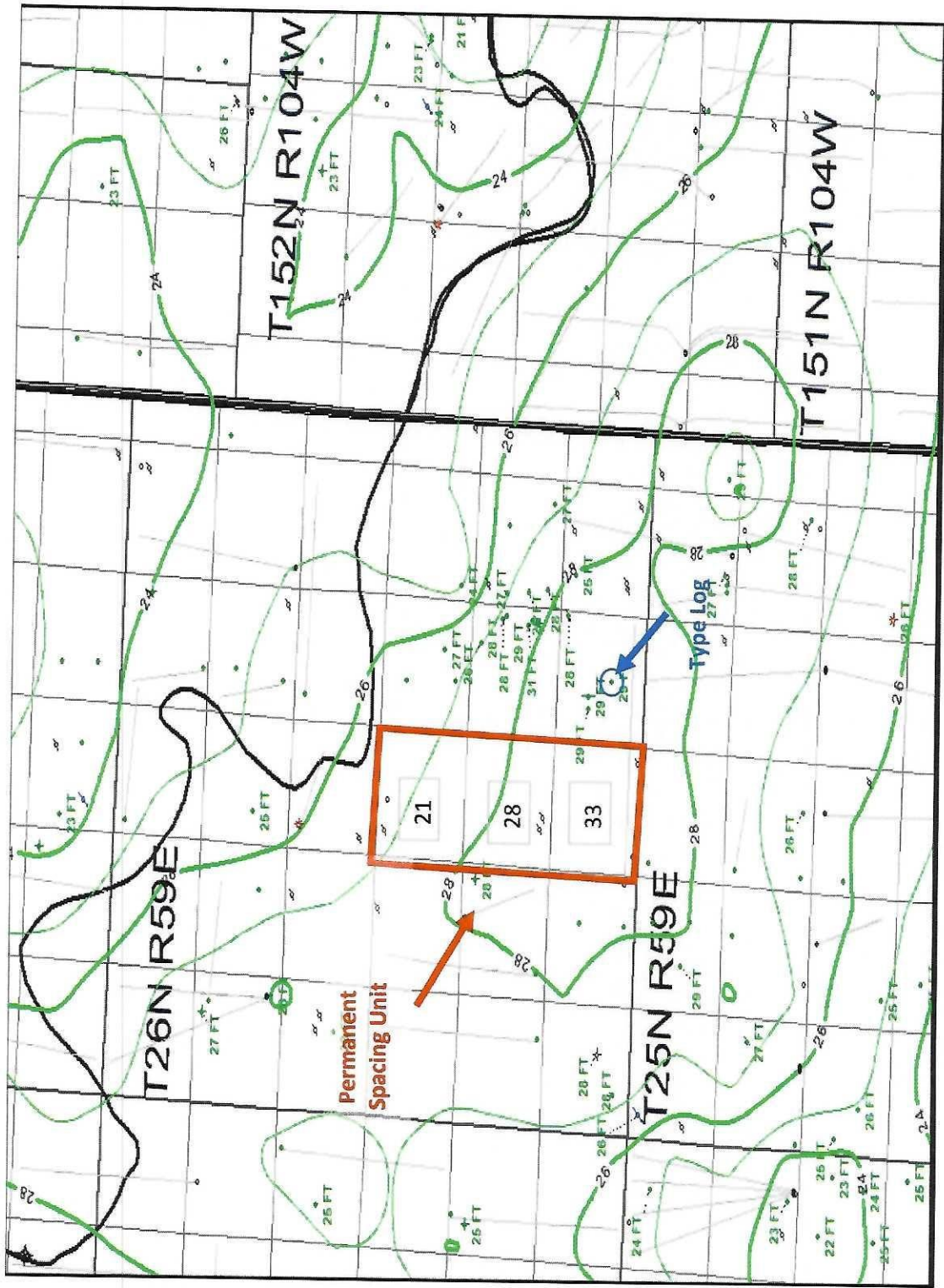
**Working Interest Owners**

Kraken Oil & Gas LLC



Top of Upper Bakken Shale Structure  
 T26N-R59E- Sections 33, 28, & 21  
 Richland County, Montana



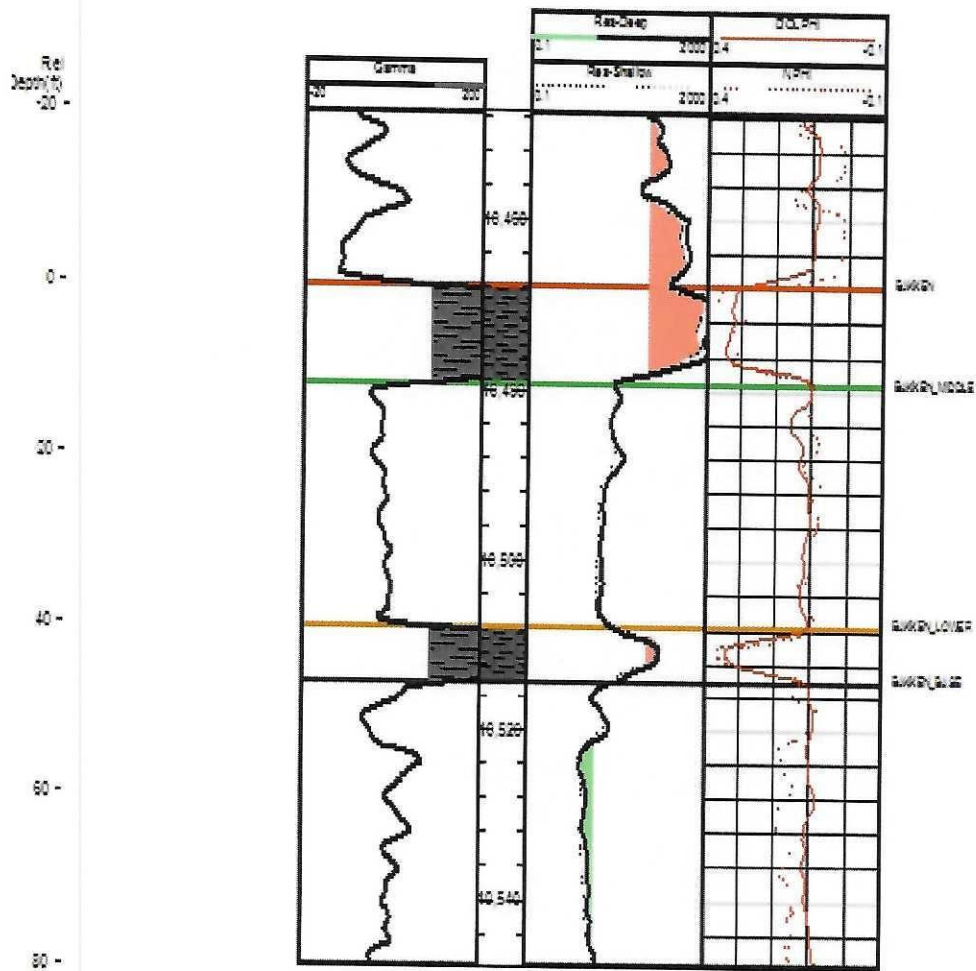


**Middle Bakken Gross Isopach**  
 T26N-R59E- Sections 33, 28, & 21  
 Richland County, Montana



250832185000  
NOHLY

CONTINENTAL RESOURCES  
NOTEBOOK #1-34  
RICHLAND  
T26N R59E S34



Type Log - Bakken Section  
Permanent Spacing Unit  
T26N-R59E- Sections 33, 28, & 21  
Richland County, Montana



**Kraken Oil & Gas, LLC**  
**Dagny 33-21 #3H**  
 Section 04, Township 25N Range 39E Lot 2 45Z FNL x 2.32Z FEL  
 Middle Bakken  
 Elm Coulee, NE in Richland County, Montana  
 ZS-083-23392

WBP  
 2/10/2021

ELEV. 2377.01  
 R/S 5.14'

**WELLBORE SCHEMATIC**

Component	Job	Size	WAPI	Grade	Conn	Length	Top	Blm	Condition	Transfered From	Comment
1/8" Compression						26	26	26			
Production Tubing	1	2.875	6.6	L-80	BLE	33.11'	23	56	New		BAL
Tubing Coups	1	2.875	6.6	L-80	BLE	4.08	56	60	New		NOV
Production Tubing	300	2.875	6.6	L-80	BLE	9919.69	60	9980	New		BAL
2 3/4" X-Profile	1	2.875			BLE	1.12	9980	9981	New		NOV
Production Tubing	1	2.875	6.6	L-80	BLE	35.17'	9981	10013	New		BAL
Crossover	1	2.875			BLE	0.66	10013	10014	New		NOV
Production Tubing	3	2.375	4.7	L-80	BLE	97.75'	10014	10112	New		BAL
1 1/2" X-Profile	1	2.375			BLE	0.95	10112	10113	New		NOV
Production Tubing	1	2.375	4.7	L-80	BLE	33.55'	10113	10145	New		BAL
T-2	1	3.75			BLE / T-2	0.34	10145	10146	Recessed		NOV
2 5/8" PDPDR	1	2.611875			T-2, BLE	0.32	10146	10147	New		NOV
4-1/2" 15.5# A213A PDPDR	1	3.75 / 2.00			BLE	6.16	10147	10183	Recessed		NOV
Blow	1	2.375 / 1.935	4.7	L50	BLE	4.1	10183	10187	New		NOV
Pump Out Plug	1	3.00 / 2.00			BLE	0.4	10187	10187	New		NOV

**Conductor**  
 1 1/2" 14.00# J-45  
 54' @ 80' MD  
 20' Hole  
 Oriented to surface

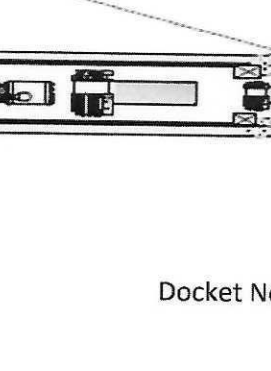
**Surface Casing**  
 8 5/8" 34# J-45  
 8 5/8" Flare Collar  
 8 5/8" 34# J-45  
 8 5/8" Flare Collar

**Intermediate Casing**  
 7" 32# HCP-110 BTC  
 7" Flare Collar  
 7" 32# HCP-110 BTC  
 7" Flare Collar

Component	Job	Size	WAPI	Grade	Conn	Length	Top	Blm	Condition	Transfered From	Comment
1 1/2" 14.00# J-45						26	26	26			
8 5/8" 34# J-45						33.11'	23	56	New		BAL
8 5/8" Flare Collar						4.08	56	60	New		NOV
8 5/8" 34# J-45						9919.69	60	9980	New		BAL
8 5/8" Flare Collar						1.12	9980	9981	New		NOV
8 5/8" 34# J-45						35.17'	9981	10013	New		BAL
8 5/8" Flare Collar						0.66	10013	10014	New		NOV
7" 32# HCP-110 BTC						97.75'	10014	10112	New		BAL
7" Flare Collar						0.95	10112	10113	New		NOV
7" 32# HCP-110 BTC						33.55'	10113	10145	New		BAL
7" Flare Collar						0.34	10145	10146	Recessed		NOV
7" 32# HCP-110 BTC						0.32	10146	10147	New		NOV
7" Flare Collar						6.16	10147	10183	Recessed		NOV
7" 32# HCP-110 BTC						4.1	10183	10187	New		NOV
7" Flare Collar						0.4	10187	10187	New		NOV

Description	Length	Top Depth, RMB	Blm Depth, RMB
1 1/2" PBR w/ LF Packer	15.00	10,046.17'	10,061.17'
New Empty Liner Top Packer	13.31	10,061.17'	10,074.49'
New Empty Liner Top Manager Plug 2	16.31	10,074.49'	10,090.80'
4-1/2" 13.5# P-110, DWCC Casing	41.41	10,090.80'	10,132.21'
4-1/2" 13.5# P-110, DWCC Casing	41.62	10,132.21'	10,173.83'
4-1/2" 13.5# P-110, DWCC Casing	41.45	10,173.83'	10,215.28'
4-1/2" 13.5# P-110, DWCC Casing	41.64	10,215.28'	10,256.92'
4-1/2" 13.5# P-110, DWCC Casing	40.96	10,256.92'	10,297.88'
4-1/2" 13.5# P-110, DWCC Casing	41.42	10,297.88'	10,339.30'
4-1/2" 13.5# P-110, DWCC Casing	40.96	10,339.30'	10,380.26'

**Liner**  
 Top of PBR at  
 Packer  
 Manager  
 4-1/2", 13.5# HCP-110, DWCC  
 4-1/2", 13.5# HCP-110, BTC



TD = 10,343'  
 TVD = 10,343'

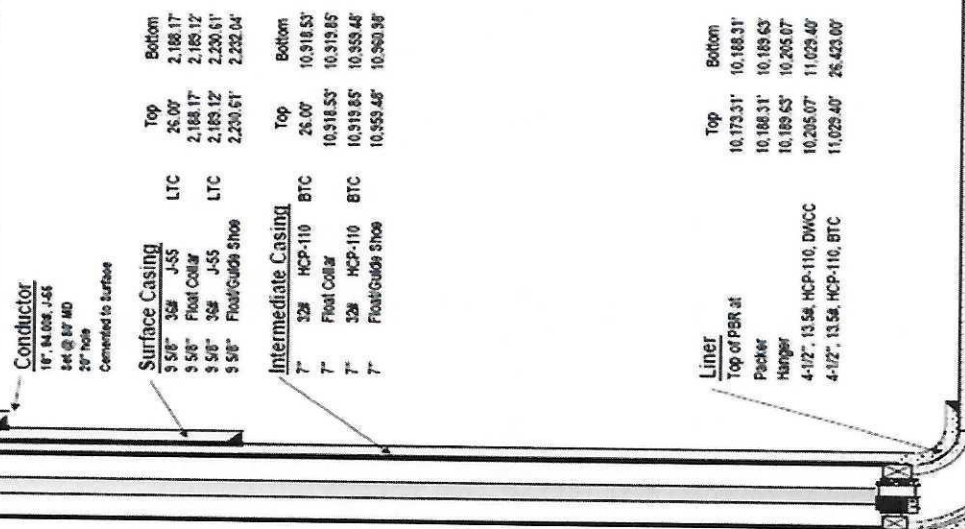


Kraken Oil & Gas, LLC  
**Dagny 33-21 #4H**  
 Section 04, Township 25N Range SSE Lot 2 452' FNL x 2.289' FEL  
 Middle Bakken  
 Elm Coulee, NE in Richland County, Montana  
 25-083-23393

JMP 12/21/2020

**WELLBORE SCHEMATIC**

LEV 21029' GL  
 RB = 25'



Typical BHA and Tubing Design for Production Tag			
Tag Hanger	BO-2 Coupling and Wrap-around	Casing	New or Used
Pup joints	2-7/8", 6.5# L-80, EUE	As needed	New or Used
Tag to surface	2-7/8", 6.5# L-80, EUE	Full Length	New or Used
X Profile Make	2-3/4" ID by 2-7/8", EUE	L-80	New or Used
1 joint of Top	2-7/8", 6.5# L-80, EUE	Full Length	New or Used
Crossover	2-7/8" EUE to 2-3/8" EUE	L-80	New or Used
4 joints of Top	2-3/8", 4.7# L-80, EUE	Full Length	New or Used
Overhead	1-3 On/Off Tool for 4-1/2", 13.5# Casing		Used or Re-dressed
Stringer	2-3/8" Stringer w/1.875" X Nipple Profile		Used or Re-dressed
Packer	3.87" Aronval AS-IX Packer for 4-1/2", 13.5# Csg		Used or Re-dressed
Pup joint	2-3/8", 4.7# L-80, EUE	4 to 6 ft	New or Used
Pump Out Pup	2-3/8", EUE Nipple w/2.00" POP and pins for ~1,500 psi		New or Re-loaded

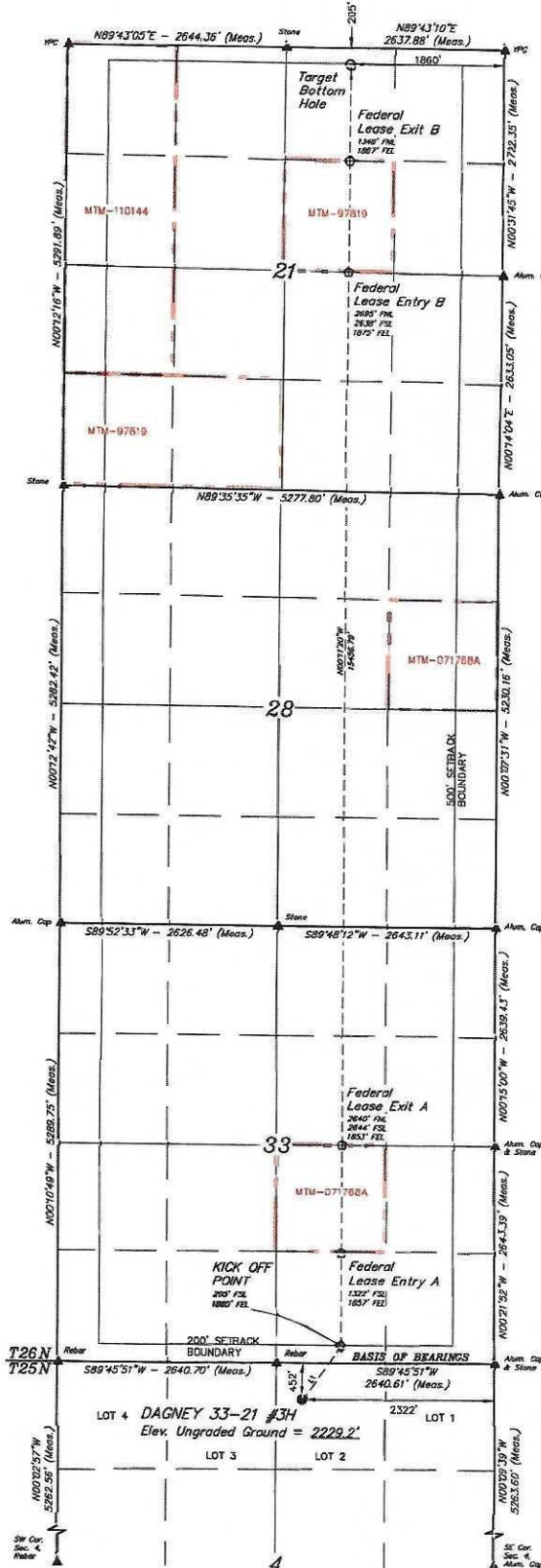
Description	Length	Top Depth, RKB	Btm Depth, RKB
15 R FBR with LT Packer	15.00	10,173.31	10,188.31
Nine Energy Liner Top Packer	1.32	10,188.31	10,189.63
Nine Energy Liner Top Hanger/Pup, JT	15.44	10,189.63	10,205.07
4-1/2", 13.5# P-110, DWCC Casing	40.82	10,205.07	10,245.89
4-1/2", 13.5# P-110, DWCC Casing	41.47	10,245.89	10,287.36
4-1/2", 13.5# P-110, DWCC Casing	41.20	10,287.36	10,328.56
4-1/2", 13.5# P-110, DWCC Casing	41.25	10,328.56	10,369.80
4-1/2", 13.5# P-110, DWCC Casing	40.77	10,369.80	10,410.67
4-1/2", 13.5# P-110, DWCC Casing	41.47	10,410.67	10,452.14
4-1/2", 13.5# P-110, DWCC Casing	41.35	10,452.14	10,493.49

TD = 26,430'  
 TVD = 10,590'

- LEGEND:**
- - PROPOSED WELLHEAD
  - ◇ - KICK-OFF POINT
  - - TARGET BOTTOM HOLE
  - ▲ - SECTION CORNERS LOCATED

**NOTE:**  
Distances referenced on plot to section lines are perpendicular.

LINE	DIRECTION	LENGTH
L1	N34°54'07"E	803.48'
L2	S89°48'20"W	1316.66'
L3	S89°48'46"W	1319.61'
L4	N88°27'19"W	1328.16'
L5	N89°51'39"W	1322.30'
L6	S89°45'51"W	1330.30'



NAD 83 (SURFACE LOCATION)	NAD 83 (KICK-OFF POINT)
LATITUDE = 47°57'11.86" (47.95322)	LATITUDE = 47°57'18.46" (47.95512)
LONGITUDE = 104°50'18.81" (104.10225)	LONGITUDE = 104°50'15.01" (104.10335)
NAD 21 (SURFACE LOCATION)	NAD 21 (KICK-OFF POINT)
LATITUDE = 47°57'11.87" (47.95322)	LATITUDE = 47°57'18.37" (47.95512)
LONGITUDE = 104°50'17.00" (104.10433)	LONGITUDE = 104°50'15.24" (104.10244)
STATE PLANE NAD 83 (MONTANA)	STATE PLANE NAD 83 (MONTANA)
N: 3295377.28 E: 238849.02	N: 329624.18 E: 238929.34
STATE PLANE NAD 21 (MT. CENTRAL)	STATE PLANE NAD 21 (MT. CENTRAL)
N: 318252.02 E: 332145.80	N: 319512.92 E: 332146.70

NAD 83 (FED. LEASE ENTRY A)	NAD 83 (FED. LEASE ENTRY B)	NAD 83 (FED. LEASE ENTRY C)	NAD 83 (FED. LEASE ENTRY D)	NAD 83 (FED. LEASE ENTRY E)	NAD 83 (TARGET BOTTOM HOLE)
LATITUDE = 47°57'25.46" (47.95683)	LATITUDE = 47°57'25.50" (47.95683)	LATITUDE = 47°57'25.31" (47.95666)	LATITUDE = 47°57'25.31" (47.95666)	LATITUDE = 47°57'25.31" (47.95666)	LATITUDE = 47°57'25.31" (47.95666)
LONGITUDE = 104°50'11.82" (104.10322)	LONGITUDE = 104°50'11.82" (104.10322)	LONGITUDE = 104°50'11.62" (104.10333)	LONGITUDE = 104°50'11.62" (104.10333)	LONGITUDE = 104°50'11.62" (104.10333)	LONGITUDE = 104°50'11.62" (104.10333)
NAD 21 (FED. LEASE ENTRY A)	NAD 21 (FED. LEASE ENTRY B)	NAD 21 (FED. LEASE ENTRY C)	NAD 21 (FED. LEASE ENTRY D)	NAD 21 (FED. LEASE ENTRY E)	NAD 21 (TARGET BOTTOM HOLE)
LATITUDE = 47°57'25.39" (47.95664)	LATITUDE = 47°57'25.41" (47.95678)	LATITUDE = 47°57'25.31" (47.95664)	LATITUDE = 47°57'25.31" (47.95664)	LATITUDE = 47°57'25.31" (47.95664)	LATITUDE = 47°57'25.31" (47.95664)
LONGITUDE = 104°50'10.21" (104.10293)	LONGITUDE = 104°50'10.17" (104.10282)	LONGITUDE = 104°50'08.82" (104.10253)	LONGITUDE = 104°50'08.82" (104.10253)	LONGITUDE = 104°50'08.82" (104.10253)	LONGITUDE = 104°50'08.82" (104.10253)
STATE PLANE NAD 83 (MONTANA)	STATE PLANE NAD 83 (MONTANA)	STATE PLANE NAD 83 (MONTANA)	STATE PLANE NAD 83 (MONTANA)	STATE PLANE NAD 83 (MONTANA)	STATE PLANE NAD 83 (MONTANA)
N: 3295961.14 E: 238996.37	N: 329696.14 E: 238996.37	N: 3295377.28 E: 238929.34	N: 3295377.28 E: 238929.34	N: 3295377.28 E: 238929.34	N: 3295377.28 E: 238929.34
STATE PLANE NAD 21 (MT. CENTRAL)	STATE PLANE NAD 21 (MT. CENTRAL)	STATE PLANE NAD 21 (MT. CENTRAL)	STATE PLANE NAD 21 (MT. CENTRAL)	STATE PLANE NAD 21 (MT. CENTRAL)	STATE PLANE NAD 21 (MT. CENTRAL)
N: 318252.02 E: 332145.80	N: 318252.02 E: 332145.80	N: 318252.02 E: 332145.80	N: 318252.02 E: 332145.80	N: 318252.02 E: 332145.80	N: 318252.02 E: 332145.80

NAD 83 (FED. LEASE ENTRY A)	NAD 83 (FED. LEASE ENTRY B)	NAD 83 (FED. LEASE ENTRY C)	NAD 83 (FED. LEASE ENTRY D)	NAD 83 (FED. LEASE ENTRY E)	NAD 83 (TARGET BOTTOM HOLE)
LATITUDE = 47°57'25.46" (47.95683)	LATITUDE = 47°57'25.50" (47.95683)	LATITUDE = 47°57'25.31" (47.95666)	LATITUDE = 47°57'25.31" (47.95666)	LATITUDE = 47°57'25.31" (47.95666)	LATITUDE = 47°57'25.31" (47.95666)
LONGITUDE = 104°50'11.82" (104.10322)	LONGITUDE = 104°50'11.82" (104.10322)	LONGITUDE = 104°50'11.62" (104.10333)	LONGITUDE = 104°50'11.62" (104.10333)	LONGITUDE = 104°50'11.62" (104.10333)	LONGITUDE = 104°50'11.62" (104.10333)
NAD 21 (FED. LEASE ENTRY A)	NAD 21 (FED. LEASE ENTRY B)	NAD 21 (FED. LEASE ENTRY C)	NAD 21 (FED. LEASE ENTRY D)	NAD 21 (FED. LEASE ENTRY E)	NAD 21 (TARGET BOTTOM HOLE)
LATITUDE = 47°57'25.39" (47.95664)	LATITUDE = 47°57'25.41" (47.95678)	LATITUDE = 47°57'25.31" (47.95664)	LATITUDE = 47°57'25.31" (47.95664)	LATITUDE = 47°57'25.31" (47.95664)	LATITUDE = 47°57'25.31" (47.95664)
LONGITUDE = 104°50'10.21" (104.10293)	LONGITUDE = 104°50'10.17" (104.10282)	LONGITUDE = 104°50'08.82" (104.10253)	LONGITUDE = 104°50'08.82" (104.10253)	LONGITUDE = 104°50'08.82" (104.10253)	LONGITUDE = 104°50'08.82" (104.10253)
STATE PLANE NAD 83 (MONTANA)	STATE PLANE NAD 83 (MONTANA)	STATE PLANE NAD 83 (MONTANA)	STATE PLANE NAD 83 (MONTANA)	STATE PLANE NAD 83 (MONTANA)	STATE PLANE NAD 83 (MONTANA)
N: 3295961.14 E: 238996.37	N: 329696.14 E: 238996.37	N: 3295377.28 E: 238929.34	N: 3295377.28 E: 238929.34	N: 3295377.28 E: 238929.34	N: 3295377.28 E: 238929.34
STATE PLANE NAD 21 (MT. CENTRAL)	STATE PLANE NAD 21 (MT. CENTRAL)	STATE PLANE NAD 21 (MT. CENTRAL)	STATE PLANE NAD 21 (MT. CENTRAL)	STATE PLANE NAD 21 (MT. CENTRAL)	STATE PLANE NAD 21 (MT. CENTRAL)
N: 318252.02 E: 332145.80	N: 318252.02 E: 332145.80	N: 318252.02 E: 332145.80	N: 318252.02 E: 332145.80	N: 318252.02 E: 332145.80	N: 318252.02 E: 332145.80

**BASIS OF BEARINGS**  
BASIS OF BEARINGS IS A G.P.S. OBSERVATION

**UELS, LLC**  
Corporate Office • 85 South 280 East  
Vernal, UT 84078 • (435) 783-1817

**WELL LOCATIONS**

LOT 4 DAGNEY 33-21 #3H  
Elev. Ungraded Ground = 2229.2'

LOT 3 LOT 2 LOT 1

**CERTIFICATE**  
THIS IS TO CERTIFY THAT THE ABOVE PLAN WAS PREPARED FROM FIELD NOTES OF ACTUAL SURVEYS MADE BY ME OR UNDER MY SUPERVISION AND THAT THIS SAME ABIDES AND CORRECTS TO THE BEST OF MY KNOWLEDGE AND BELIEF.

*Scott C. Kotter*  
REGISTERED LAND SURVEYOR  
STATE OF MONTANA

REV: 2 08-20-20 E.C. (UPDATE LEASE NUMBER)

**KRAKEN OPERATING, LLC**  
DAGNEY 33-21 #3H  
LOT 2, SECTION 4, T25N, R59E, P.M.M.  
RICHLAND COUNTY, MONTANA

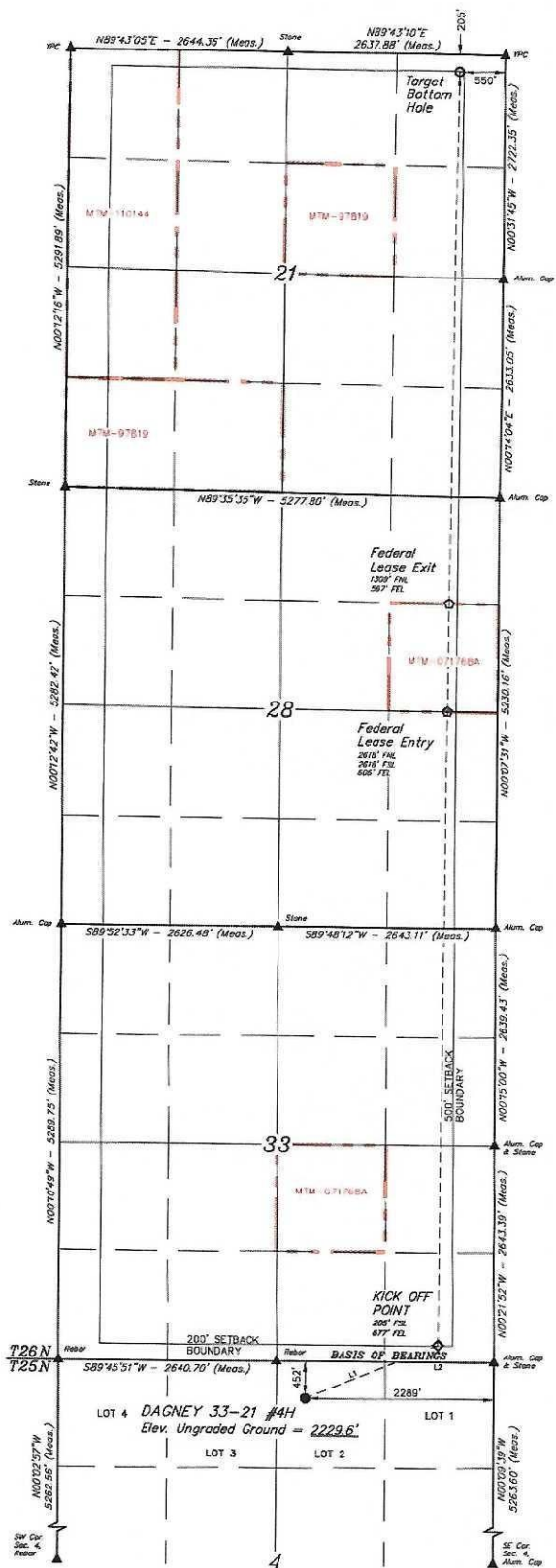
SURVEYED BY: S.C., T.R. 01-20-20 SCALE: 1" = 1000'  
DRAWN BY: S.C.S. 02-12-20

T25N, R59E, P.M.M.

- LEGEND:**
- = PROPOSED WELLHEAD
  - ◆ = KICK-OFF POINT
  - = TARGET BOTTOM HOLE
  - ▲ = SECTION CORNERS LOCATED

**NOTE:**  
Distances referenced on plot to section lines are perpendicular.

LINE TABLE		
LINE	DIRECTION	LENGTH
L1	N67°35'21"E	1741.23'
L2	S89°45'51"W	2640.81'



NAD 83 (SURFACE LOCATION)	NAD 83 (KICK-OFF POINT)	NAD 83 (FED. LEASE ENTRY)	NAD 83 (FED. LEASE EXIT)	NAD 83 (TARGET BOTTOM HOLE)
LATITUDE = 47°51'11.90" (147.95322)	LATITUDE = 47°51'14.51" (147.95511)	LATITUDE = 47°50'58.37" (147.95241)	LATITUDE = 47°58'42.29" (147.99481)	LATITUDE = 47°59'20.95" (147.99486)
LONGITUDE = 101°00'18.33" (101.00506)	LONGITUDE = 101°00'18.44" (101.00506)	LONGITUDE = 101°00'53.68" (101.00910)	LONGITUDE = 101°00'53.30" (101.00910)	LONGITUDE = 101°00'52.37" (101.00756)
NAD 83 (NEAREST SECTION CORNER)	NAD 83 (KICK-OFF POINT)	NAD 83 (FED. LEASE ENTRY)	NAD 83 (FED. LEASE EXIT)	NAD 83 (TARGET BOTTOM HOLE)
LATITUDE = 47°51'11.90" (147.95322)	LATITUDE = 47°51'14.51" (147.95511)	LATITUDE = 47°50'58.37" (147.95241)	LATITUDE = 47°58'42.29" (147.99481)	LATITUDE = 47°59'20.95" (147.99486)
LONGITUDE = 101°00'18.33" (101.00506)	LONGITUDE = 101°00'18.44" (101.00506)	LONGITUDE = 101°00'53.68" (101.00910)	LONGITUDE = 101°00'53.30" (101.00910)	LONGITUDE = 101°00'52.37" (101.00756)
STATE PLANE NAD 83 (MONTANA)	STATE PLANE NAD 83 (MONTANA)	STATE PLANE NAD 83 (MONTANA)	STATE PLANE NAD 83 (MONTANA)	STATE PLANE NAD 83 (MONTANA)
N = 1194579.13 E = 2286.524	N = 1194579.13 E = 2286.524	N = 1194579.13 E = 2286.524	N = 1194579.13 E = 2286.524	N = 1194579.13 E = 2286.524
STATE PLANE NAD 27 (MT. CENTRAL)	STATE PLANE NAD 27 (MT. CENTRAL)	STATE PLANE NAD 27 (MT. CENTRAL)	STATE PLANE NAD 27 (MT. CENTRAL)	STATE PLANE NAD 27 (MT. CENTRAL)
N = 810586.55 E = 3322741.81	N = 810586.55 E = 3322741.81	N = 810586.55 E = 3322741.81	N = 810586.55 E = 3322741.81	N = 810586.55 E = 3322741.81



**CERTIFICATE**  
DESIGN CERTIFY HAS THE ABOVE PLAT WAS PREPARED FROM FIELD MEASUREMENTS MADE BY ME OR UNDER MY SUPERVISION AND THAT THE SAME ARE TRUE AND CORRECT TO THE BEST OF MY KNOWLEDGE AND BELIEF.

*Shawn C. Kralen*  
REGISTERED LAND SURVEYOR  
STATE OF MONTANA

REV 2 08-20-20 E.C. (UPDATE LEASE NUMBER)  
**KRAKEN OPERATING, LLC**  
DAGNEY 33-21 64H  
LOT 2, SECTION 4, T25N, R59E, P.M.M.  
RICHLAND COUNTY, MONTANA

**BASIS OF BEARINGS**  
BASIS OF BEARINGS IS A GPS OBSERVATION

**UELS, LLC**  
Corporate Office • 85 South 200 East  
Vernal, UT 84078 • (435) 789-1017



SURVEYED BY	S.A., T.R.	01-20-20	SCALE
DRAWN BY	S.C.S.	02-12-20	1" = 1000'

**WELL LOCATION PLAT**



**Kraken Operating LLC**  
**Permanent Spacing**  
**DAGNEY 33-21 #3H**  
**T25N R59E Sections 33 & 28 & 21**  
**Richland County, Montana**  
**25-083-23392-0000**

**Reserves and Economic Analysis**

**Reservoir Properties**

Formation Type	Dolomitic Limestone
Vertical Thickness (ft)	38
Water Saturation	30%
Porosity	7%
Reservoir Temperature (deg F)	220
Oil Gravity (deg API)	42
Gas Gravity	0.95
GOR (SCF/STB)	1,000
Oil Formation Volume Factor	1.4 RB/STB

**OOIP and Recovery**

Spacing Unit Size (Ac)	1,920
OOIP (bbl/sec)	11,400,000
EUR - Decline Curve Analysis (bbl)	945,000
Oil Recovery Factor	4.1%

**Economics**

Product Pricing		3/17/2021 NYMEX Strip
Working Interest		100.00%
Net Revenue Interest		80.00%
Net Sales (M)	\$	38,147
Operating Expense (M)	\$	5,847
Severance Tax (M)	\$	2,006
Net Income (M)	\$	30,294
Net Investment (M)	\$	7,590
Undiscounted Net/Investment		3.99



**Kraken Operating LLC**

**Permanent Spacing**

**DAGNEY 33-21 #4H**

**T25N R59E Sections 33 & 28 & 21**

**Richland County, Montana**

**25-083-23393-0000**

**Reserves and Economic Analysis**

**Reservoir Properties**

Formation Type	Dolomitic Limestone
Vertical Thickness (ft)	38
Water Saturation	30%
Porosity	7%
Reservoir Temperature (deg F)	220
Oil Gravity (deg API)	42
Gas Gravity	0.95
GOR (SCF/STB)	1,000
Oil Formation Volume Factor	1.4 RB/STB

**OOIP and Recovery**

Spacing Unit Size (Ac)	1,920
OOIP (bbl/sec)	11,400,000
EUR - Decline Curve Analysis (bbl)	945,000
Oil Recovery Factor	4.1%

**Economics**

Product Pricing	3/17/2021 NYMEX Strip
Working Interest	100.00%
Net Revenue Interest	80.00%
Net Sales (M)	\$ 38,147
Operating Expense (M)	\$ 5,847
Severance Tax (M)	\$ 2,006
Net Income (M)	\$ 30,294
Net Investment (M)	\$ 7,590
Undiscounted Net/Investment	3.99



Kraken Operating LLC

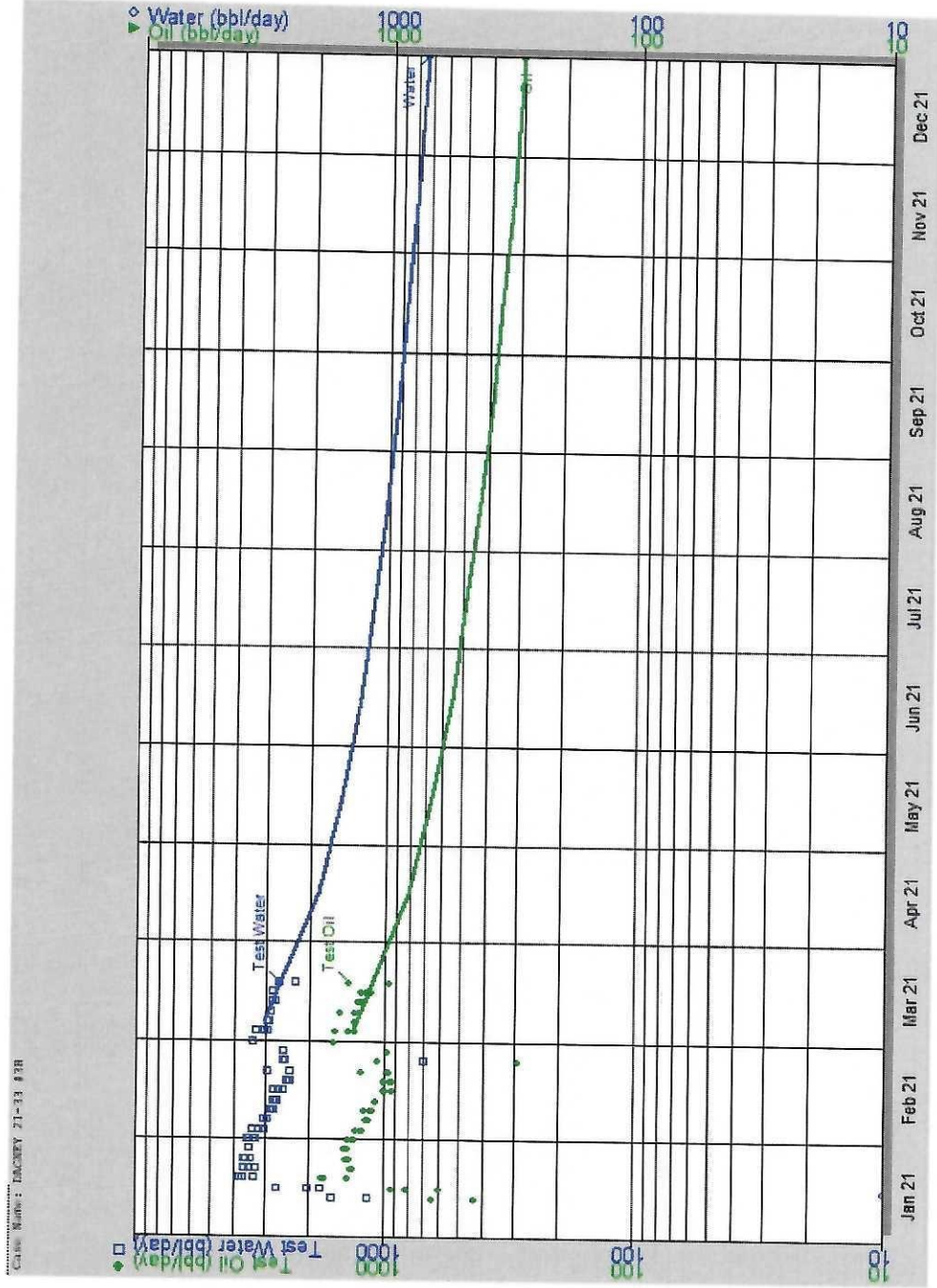
Production Profile

DAGNEY 33-21 #3H

T25N R59E Sections 33 & 28 & 21

Richland County, Montana

25-083-23392-0000



Kraken Operating LLC  
 Production Profile  
 DAGNEY 33-21 #4H  
 T25N R59E Sections 33 & 28 & 21  
 Richland County, Montana  
 25-083-23393-0000

